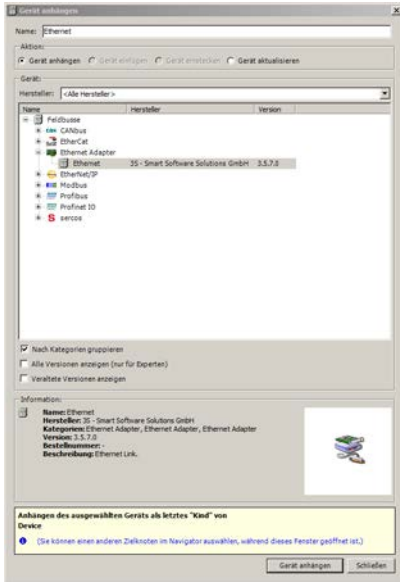


# Connection RSLogix5000 to CoDeSys V3.5 SP7 Patch 1:

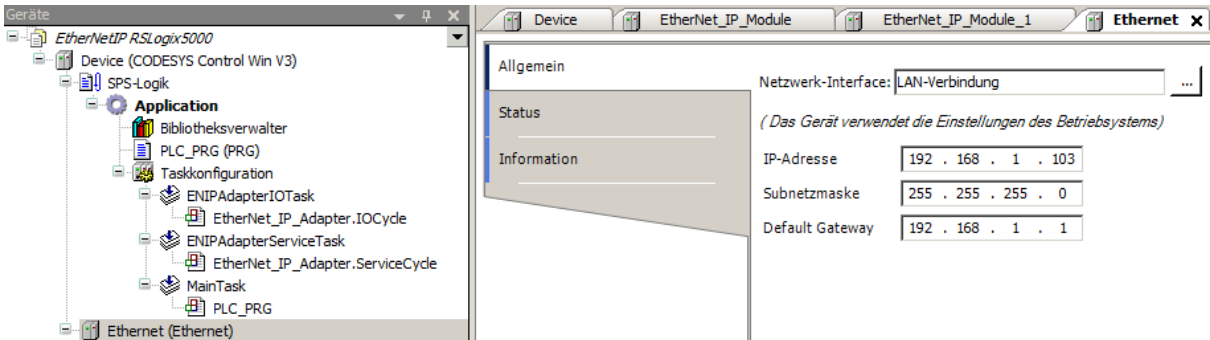
Example:

## Configuration Codesys:

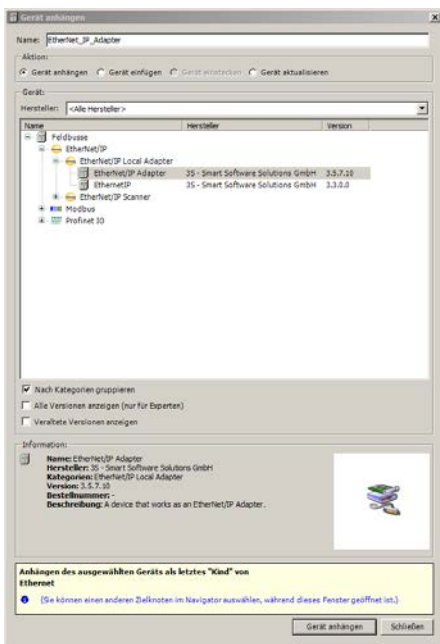
1. Add a Ethernet Card:



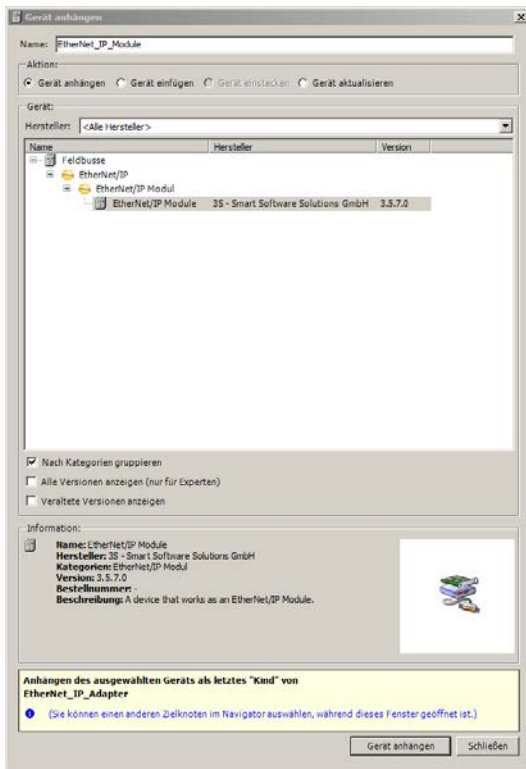
2. Configure the Network Adapter:



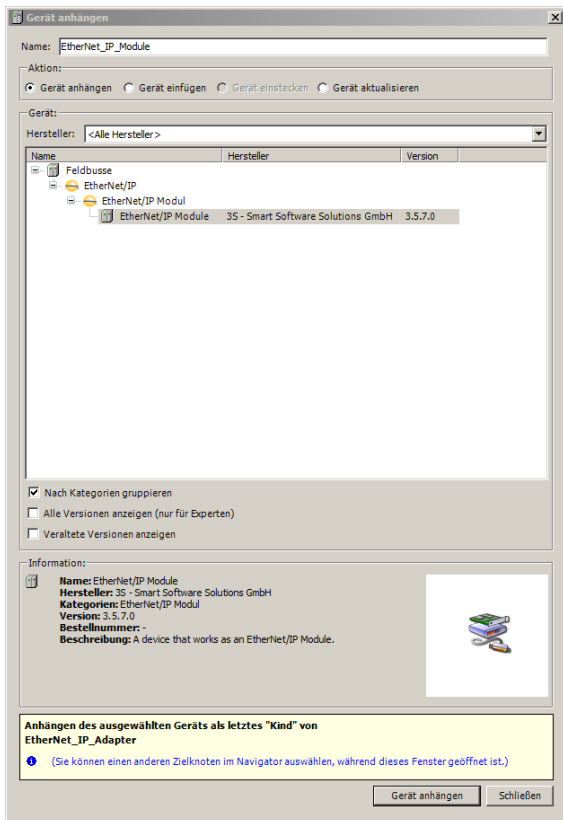
3. Add the EtherNet/IP Adapter:



#### 4. Add the EtherNet/IP Module for Input:



#### 5. Add the EtherNet/IP Module for Output:



## 6. Configure the Input Module:

The screenshot shows the configuration of an EtherNet/IP Module in SIMATIC Manager. The left pane displays the project tree for 'EtherNet/IP RSLogix5000', with 'EtherNet\_IP\_Module' selected under the 'Ethernet (Ethernet)' section. The right pane shows the 'Modulinformation' tab for 'Word Input Module'.

**Modulinformation:**

- Modul: Word Input Module
- Herstellername: 3S - Smart Software Solutions GmbH
- Hersteller-ID: 1285
- Produktname: Word Input Module
- Produktcode: 105
- Major Revision: 1
- Minor Revision: 1

The 'Kanäle' table is empty, and the 'IEC-Objekte' table shows the module mapping:

Variable	Mapping	Typ
EtherNet_IP_Module	↔	Module

## 7. Configure the Output Module:

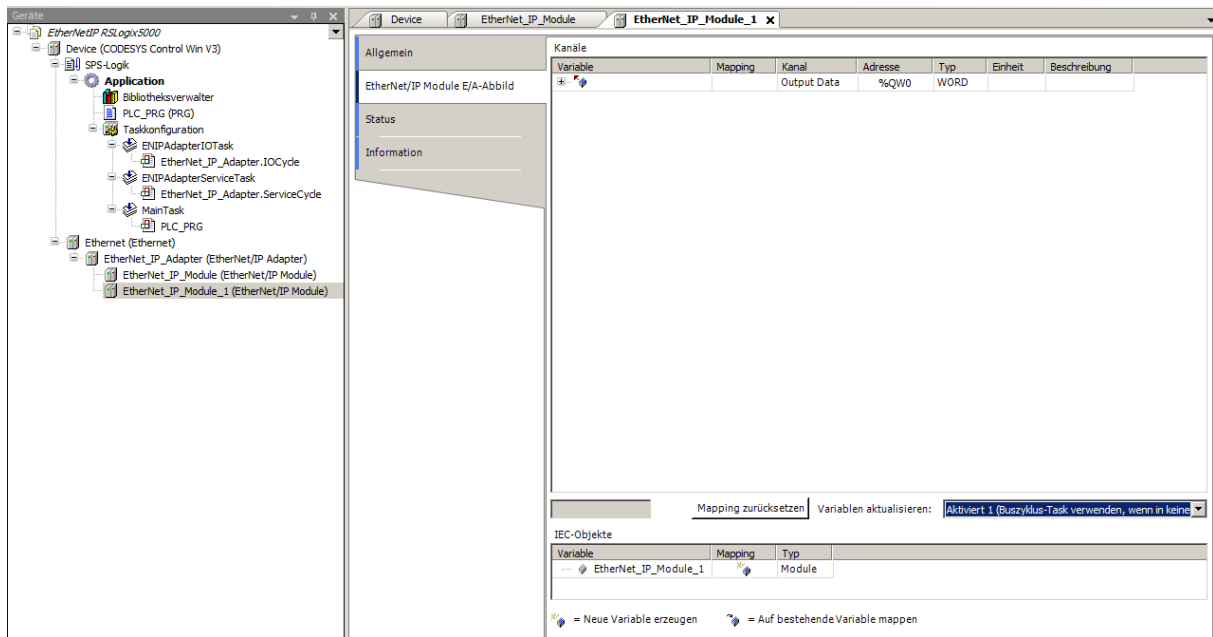
The screenshot shows the configuration of an EtherNet/IP Module in SIMATIC Manager. The left pane displays the project tree for 'EtherNet/IP RSLogix5000', with 'EtherNet\_IP\_Module\_1' selected under the 'Ethernet (Ethernet)' section. The right pane shows the 'Modulinformation' tab for 'Word Output Module'.

**Modulinformation:**

- Modul: Word Output Module
- Herstellername: 3S - Smart Software Solutions GmbH
- Hersteller-ID: 1285
- Produktname: Word Output Module
- Produktcode: 109
- Major Revision: 1
- Minor Revision: 1

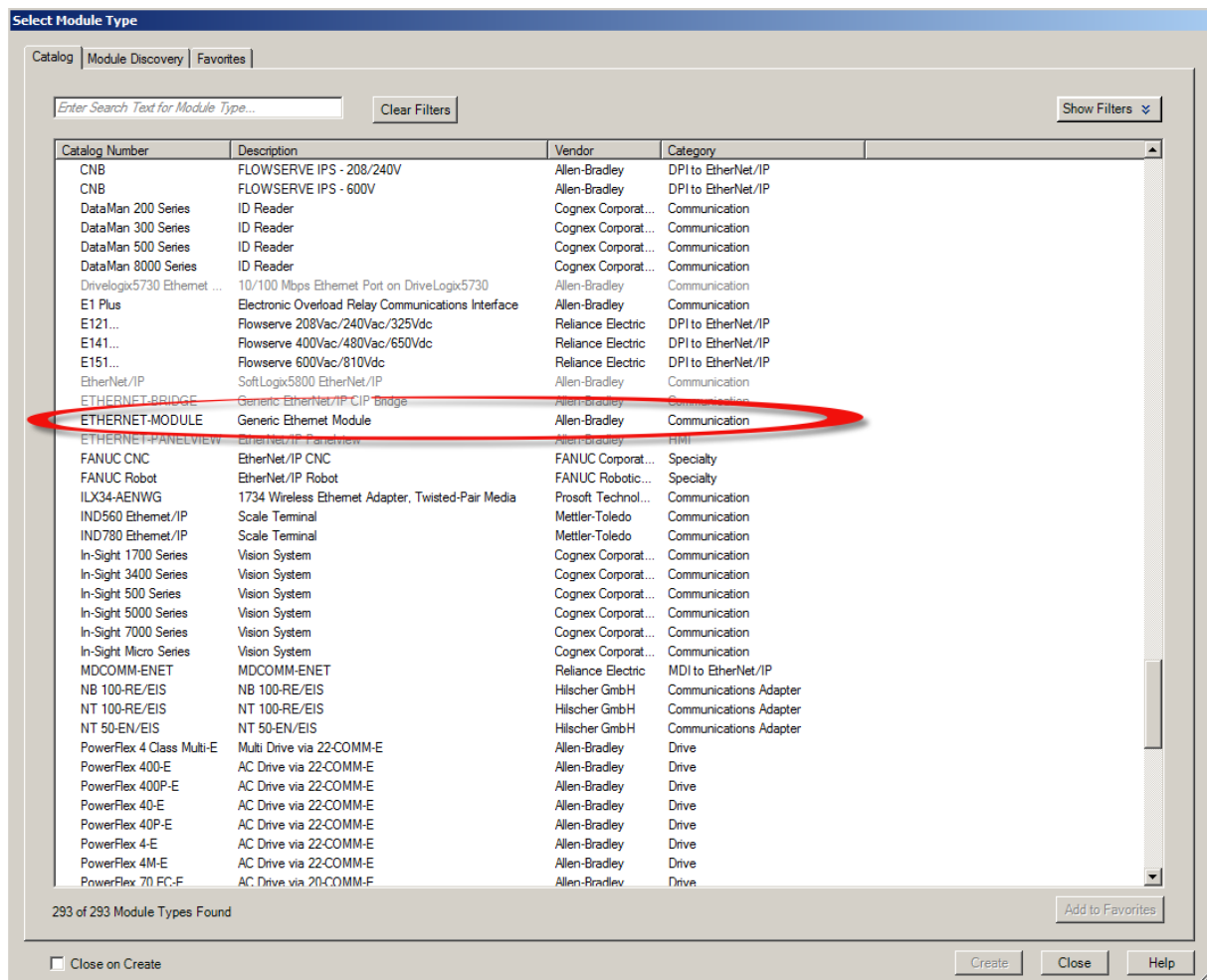
The 'IEC-Objekte' table shows the module mapping:

Variable	Mapping	Typ
EtherNet_IP_Module_1	↔	Module

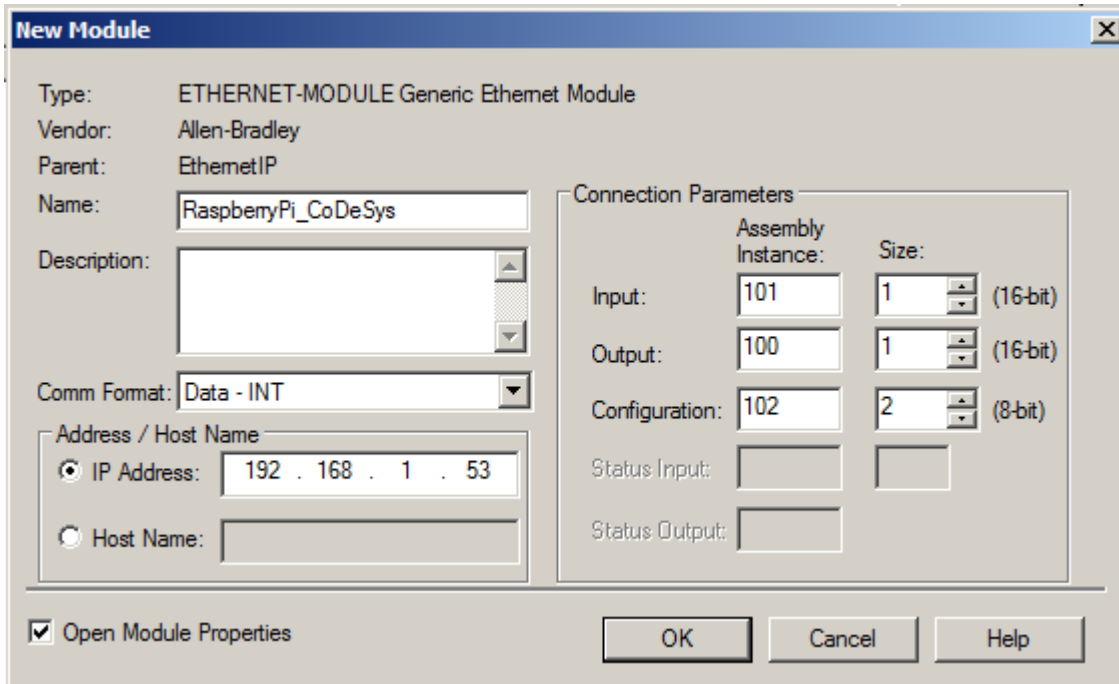


## Configuration RSLogix5000:

### 1. Add Generic Ethernet Module:



## 2. Configure the Module:



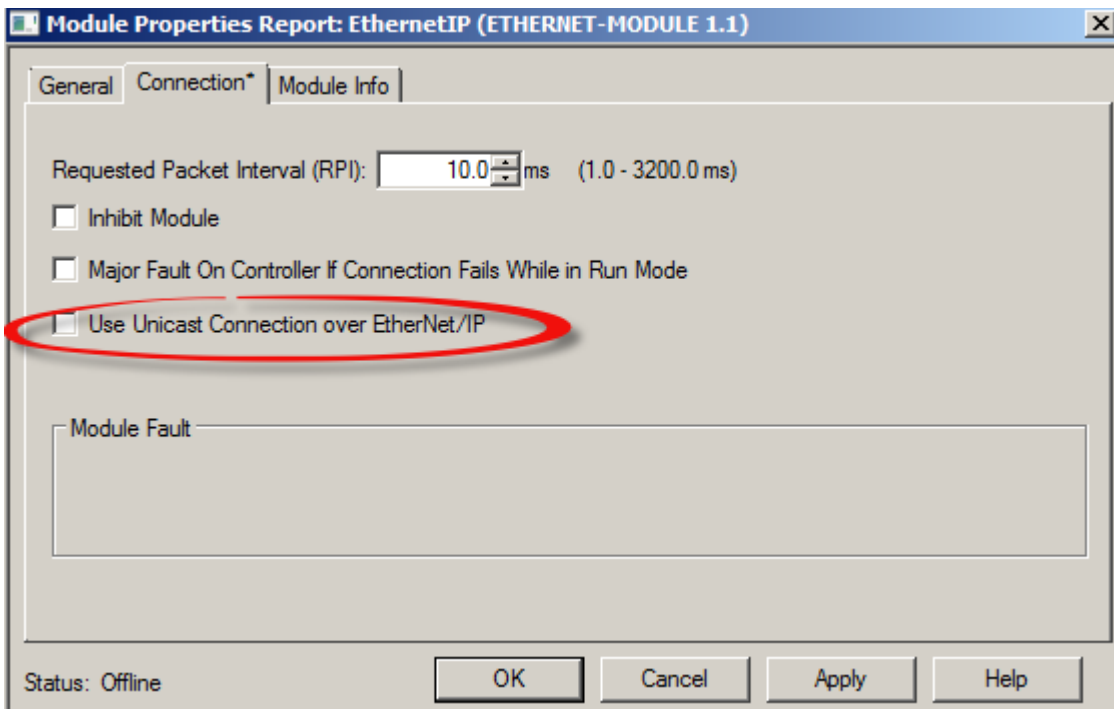
The 'New Module' dialog box is shown with the following configuration:

- Type: ETHERNET-MODULE Generic Ethernet Module
- Vendor: Allen-Bradley
- Parent: EthernetIP
- Name: RaspberryPi\_CoDeSys
- Description: (empty text area)
- Comm Format: Data - INT
- Address / Host Name:
  - IP Address: 192 . 168 . 1 . 53
  - Host Name: (empty text field)
- Connection Parameters:

	Assembly Instance:	Size:	
Input:	101	1	(16-bit)
Output:	100	1	(16-bit)
Configuration:	102	2	(8-bit)
Status Input:			
Status Output:			

At the bottom, there is a checked checkbox for 'Open Module Properties' and buttons for 'OK', 'Cancel', and 'Help'.

## 3. Important!!! Disable Use Unicast Connection over EtherNet/IP:



The 'Module Properties Report: EthernetIP (ETHERNET-MODULE 1.1)' dialog box is shown with the following configuration:

- General | Connection\* | Module Info
- Requested Packet Interval (RPI): 10.0 ms (1.0 - 3200.0 ms)
- Inhibit Module
- Major Fault On Controller If Connection Fails While in Run Mode
- Use Unicast Connection over EtherNet/IP (highlighted with a red circle)
- Module Fault: (empty text area)

At the bottom, the status is 'Offline' and there are buttons for 'OK', 'Cancel', 'Apply', and 'Help'.

That's all!!!